



# Transparent LED Display

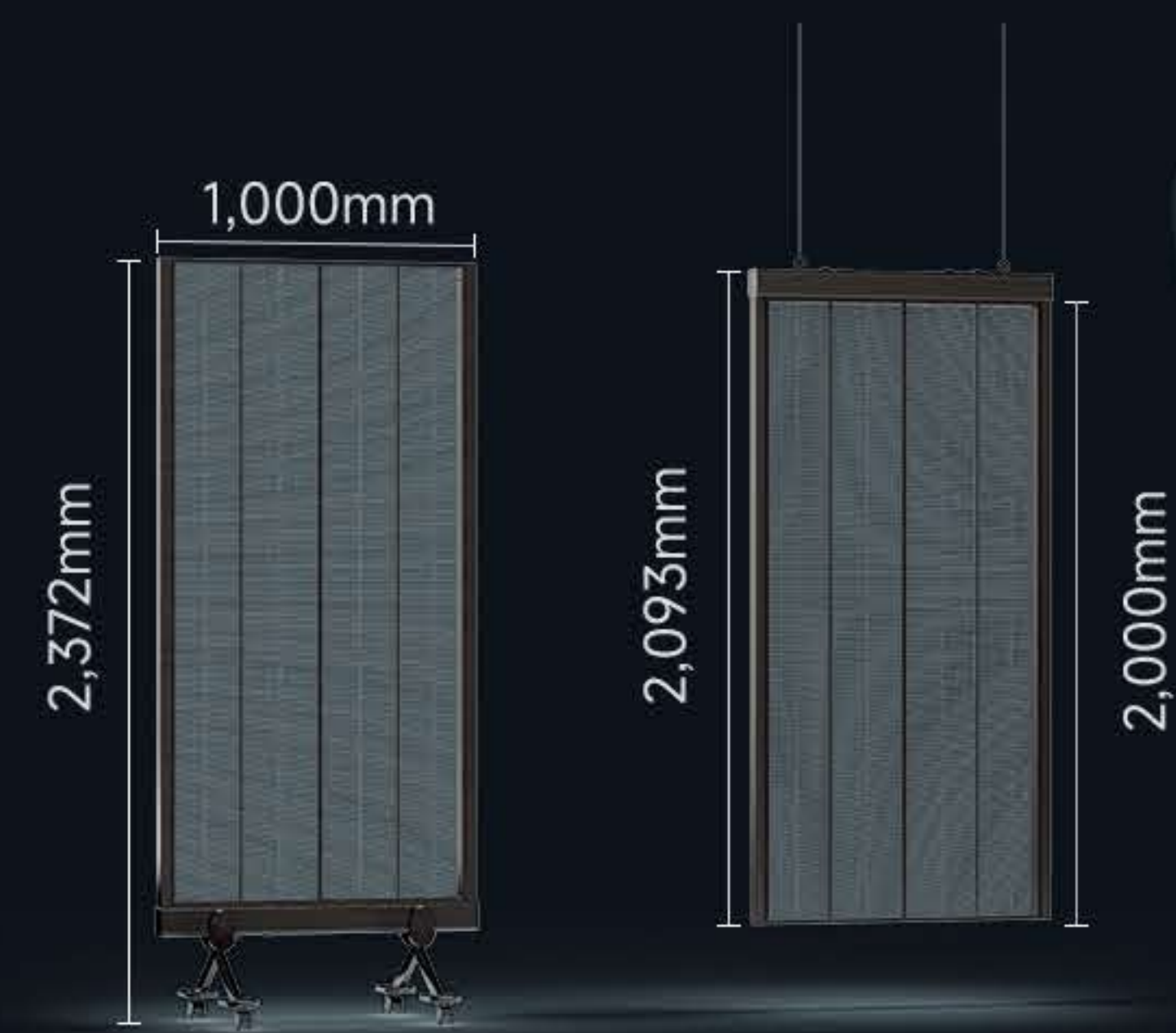
**STP Series**

**Pixel Pitch (mm) : 2.8-5.6 / 3.9-7.8 / 3.47-3.47 / 3.9-3.9**

**Standard Display Size (mm) : 1,000\*2,000\*54**

## Sleek Size & Smart Structure

The STP Series transparent LED poster screen is available in multiple pixel pitches — 2.8-5.6mm, 3.9-7.8mm, 3.47-3.47mm, 3.9-3.9mm — allowing flexible adaptation to diverse resolution requirements. The standard display size is 1,000×2,000×54mm. It features a frame size of 1,000×2,093×80mm, with optional configurations including a frame with stand (1,000×2,297×600mm) or frame with wheels (1,000×2,372×600mm), offering flexibility for different installation preferences.



### Streamlined & Durable Design

Offers a robust structural build paired with a clean, modern aesthetic.



### Ultra-Slim Power Box

Reduces visual clutter, ensuring a cleaner and more organized display environment.

### Ultra-Narrow Aluminum Frame

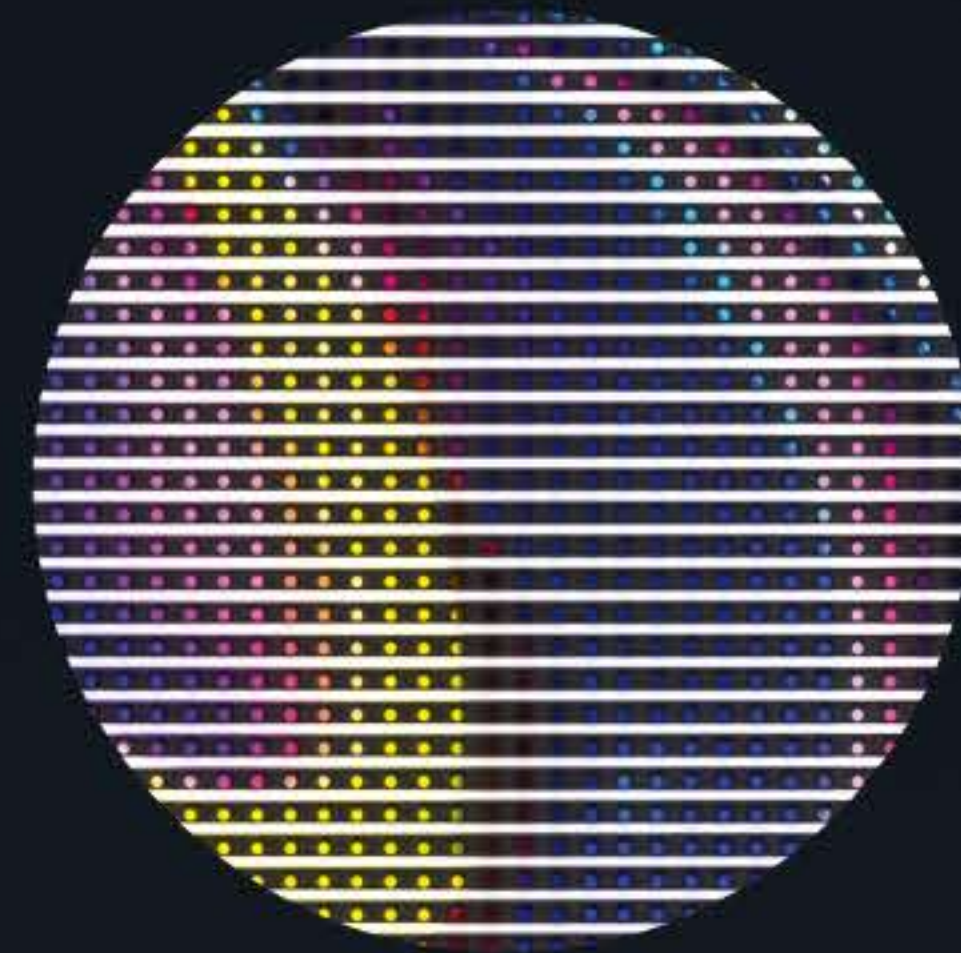
Features minimalistic lines and enhanced structural reliability.

## Lightweight and Structurally Resilient

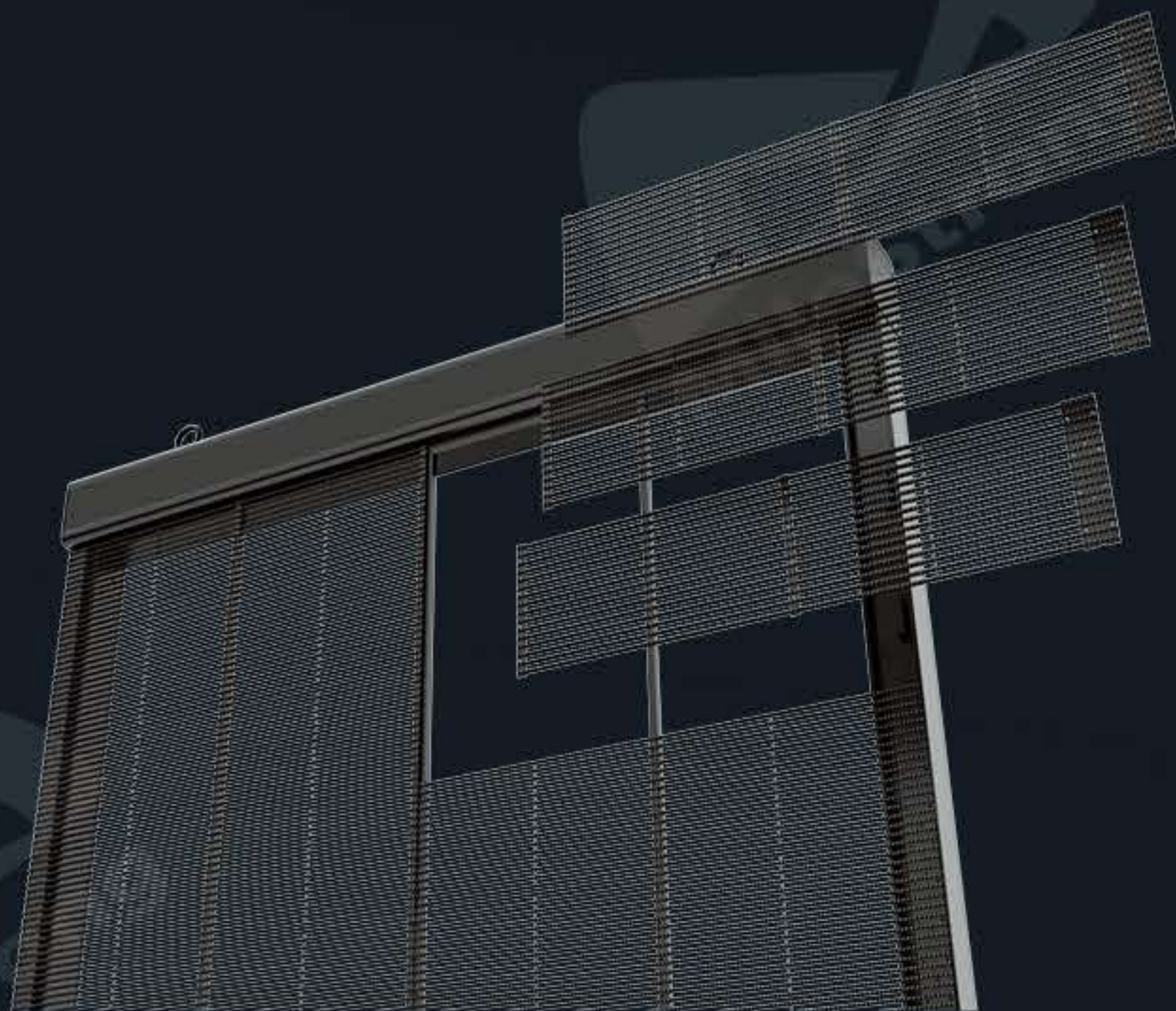
Constructed from high-strength aluminum alloy, the STP Series achieves an optimal balance between structural integrity and lightweight portability. Its clean, industrial-grade design ensures seamless integration into high-end commercial spaces without compromising aesthetics or durability.

## High Transparency & High Brightness

Combining high-definition resolution with superior transparency, the STP Series delivers vivid, sharp images without obstructing ambient light. The high brightness ensures clear visibility even in well-lit indoor environments, preserving openness while enhancing visual impact.



Intelligent color calibration  
Correct color deviation

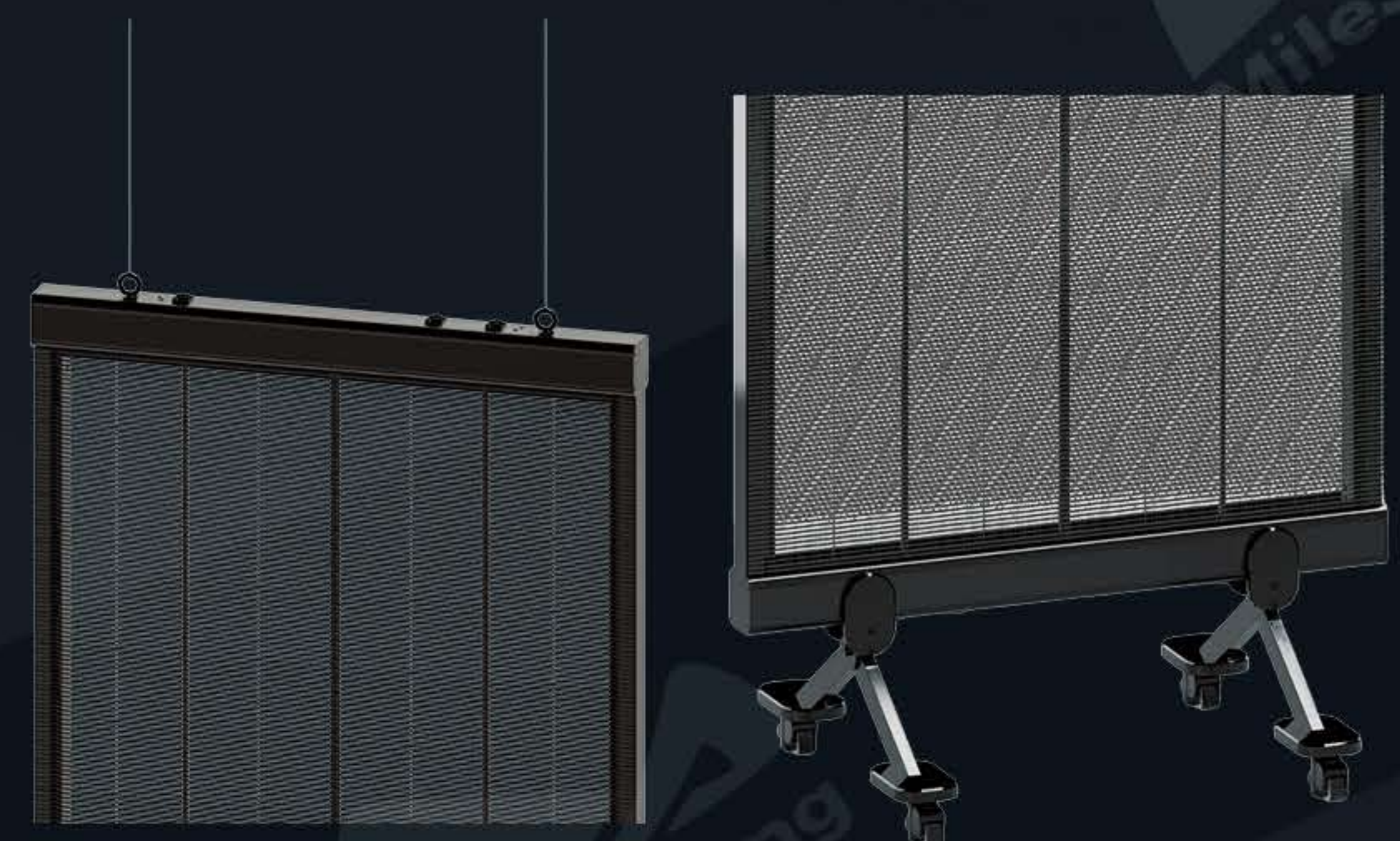


## Flexible Suspension and Freestanding Placement

Installation flexibility is enhanced through both suspension capability and floor-standing configurations. The display can be suspended using hanging brackets or placed directly on the floor using an integrated stand or wheel base, allowing effortless repositioning and reconfiguration.

## Front Maintenance & Efficient Installation

Designed for ease of service, the STP Series supports full front maintenance. Key components such as LED modules, power supplies, and IC boards can be accessed and replaced from the front, reducing maintenance time. The quick-lock cabinet structure further simplifies installation, improving operational efficiency and lowering long-term service costs.



## Plug-and-Play & Wireless Control

The STP Series features a built-in sending system for instant setup — just connect the power to activate. Through a dedicated mobile app and Wi-Fi connection, users can easily update content, adjust settings, and manage playback anytime, anywhere.

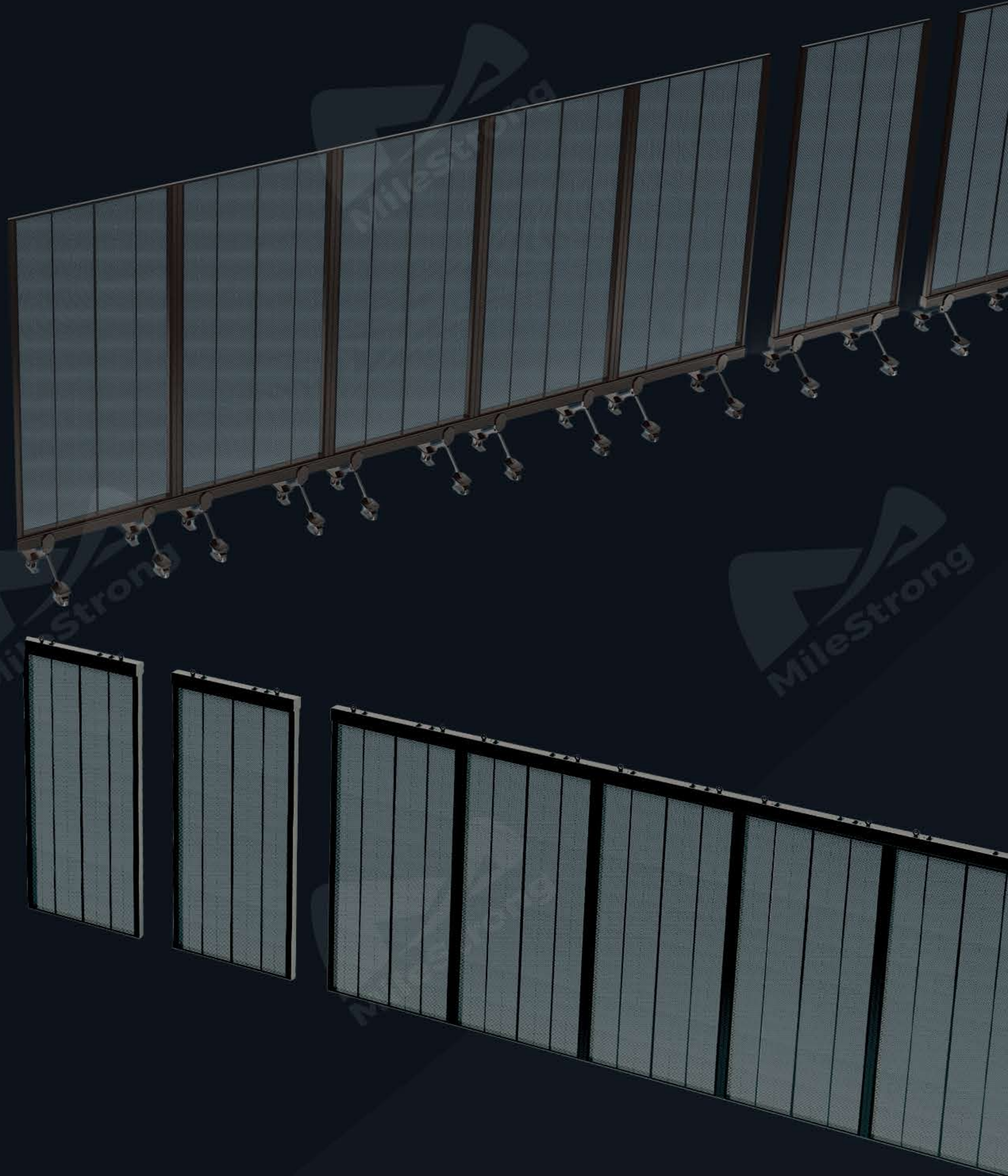
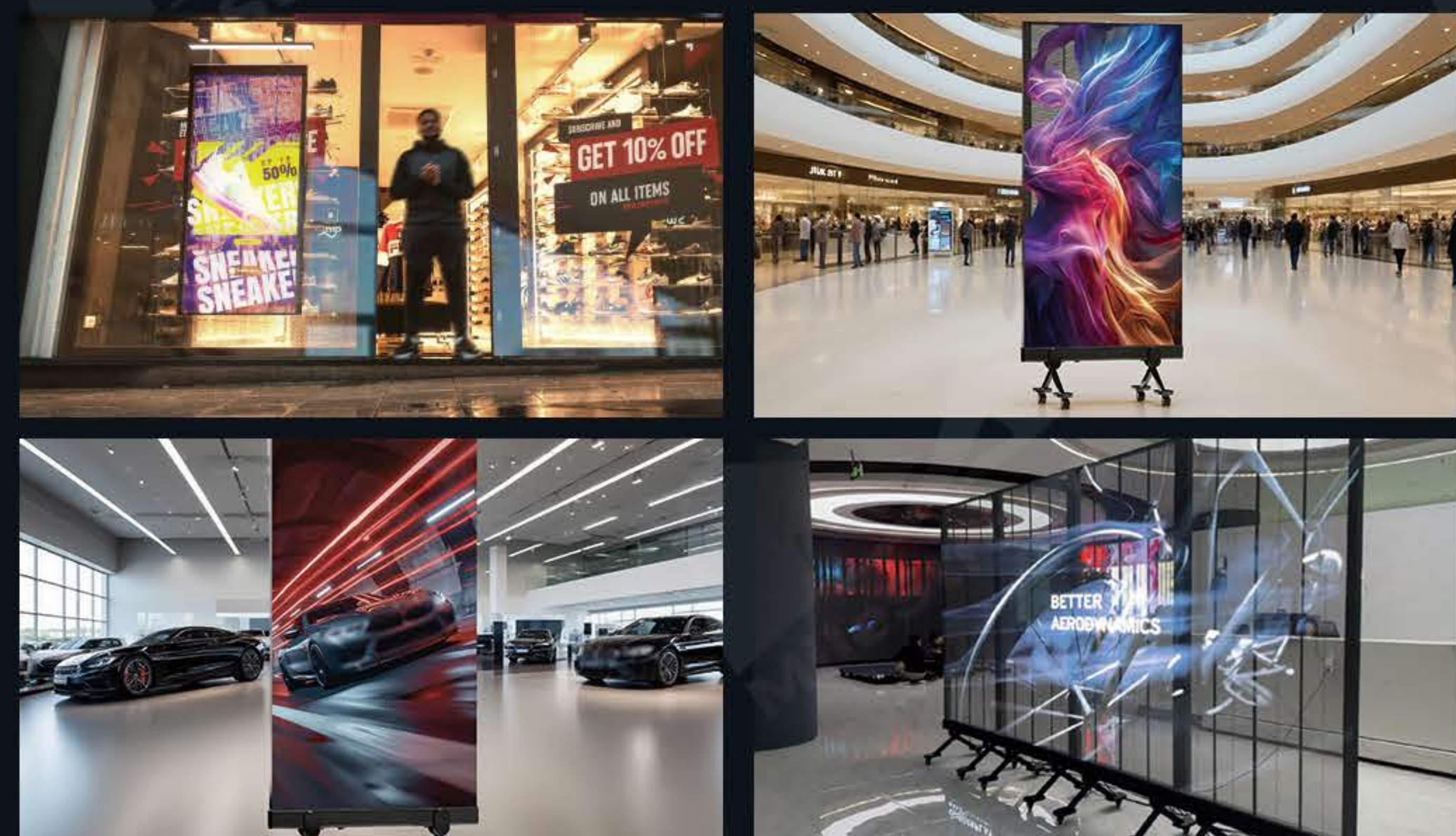


# Modular and Scalable Display Configuration

The modular design enables multiple units to be seamlessly joined into a larger composite screen. This scalability allows for customized screen sizes and flexible layout designs, catering to various spatial and visual requirements in commercial and event settings.

## Application Scenarios

Combining aesthetic elegance with high-performance technology, the STP poster screen is ideal for boutiques, tech stores, banks, showrooms, and brand launches — making digital engagement effortless and stylish.



## Parameters

Items	STP2.8-5.6	STP3.9-7.8	STP3.47-3.47	STP3.9-3.9
Pixel Pitch	2.8-5.6mm	3.9-7.8mm	3.47-3.47mm	3.9-3.9mm
Module Size (W×H)	500×125mm	500×125mm	500×62.5mm	500×62.5mm
Module Resolution (W×H)	176×22	128×16	144×24	128×16
Display Size (W×H×D)	1,000×2,000×54mm			
Frame Size (W×H×D)	1,000×2,093×80mm			
Frame Size with Stand (W×H×D)	1,000×2,297×600mm			
Frame Size with Wheel (W×H×D)	1,000×2,372×600mm			
Module Arrangement (W×H)	2×16	2×16	2×32	2×32
Pixel Density (pixels/m <sup>2</sup> )	61,952	32,768	82,944	65,536
Transparency Rate	60%	75%	45%	50%
Product Weight (kg/m <sup>2</sup> )	20kg (26.5kg with stand; 29.5kg with wheels)			
Scan Mode	1/11	1/8	1/16	1/16
Refresh Rate	3,840 Hz			
Cabinet Material	Aluminum frame			
Maintenance	Front			
Viewing Angle	140°/140°			
Brightness	4,500 nits			
Grayscale	16 bit			
Signal Input	AV, S-Video, VGA, DVI, YPbPr, HDMI, SDI			
Maximum Power (W/m <sup>2</sup> )	800			
Average Power (W/m <sup>2</sup> )	240			
Operating Environment	-20 °C ~ 60 °C, 10% ~ 90% RH			

\* The specifications are for reference only. Actual parameters may vary depending on the specific model or contractual agreement.



*Bring your ideas into reality*

### **MileStrong Headquarters & Showroom**

4/F, Building B15, Phase II, Xincheng Chuangzhi Industrial Park, No. 456 Heping Road, Furong District, Changsha, Hunan, China

### **Shenzhen MileStrong Conventional Display Division**

Building 4, Yinjin Technology Industrial Park, Fengjing South Road, Hewan Community, Matian Subdistrict, Guangming District, Shenzhen, Guangdong, China

### **Shenzhen MileStrong XR/Immersive Display Division**

3/F, Building 5, Xinlianhe Industrial Park, Bao'an District, Shenzhen, Guangdong, China

### **Shenzhen MileStrong Transparent Display Division**

3/F, Tianyou Building, Yuekang Road, Bao'an District, Shenzhen, Guangdong, China

**Shenzhen Milestrong Technology Co., Ltd.**



Website



WhatsApp



WeChat



TikTok



YouTube