



Transparent LED Display

STB Series

Pixel Pitch (mm) : 2.6 / 2.97 / 3.47 / 3.91

Cabinet Size (mm) : 500*500 / 500*1,000 / 1,000*500 / 1,000*750 / 1,000*1,000



Multiple Pixel Pitch and Panel Size Options

The STB series provides a range of pixel pitches — 2.6mm, 2.97mm, 3.47mm, and 3.91mm — to suit different visual requirements. It also comes in various panel sizes including 500×500mm, 500×1,000mm, 1,000×500mm, 1,000×750mm, and 1,000×1,000mm, offering installation flexibility for diverse display layouts.

Ultra-Thin and Lightweight Design with Durable Aluminum Frame

The STB Series combines a panel weight of less than 11kg/m² with a slim profile, making it easy to install and ideal for space-sensitive environments. Its high-strength aluminum frame ensures both visual elegance and reliable structural performance.

Firm Locking Structure

High-strength aluminum alloy screws that resist deformation after locking.



Ultra-Narrow Power Box

Creates a cleaner and more organized display window.

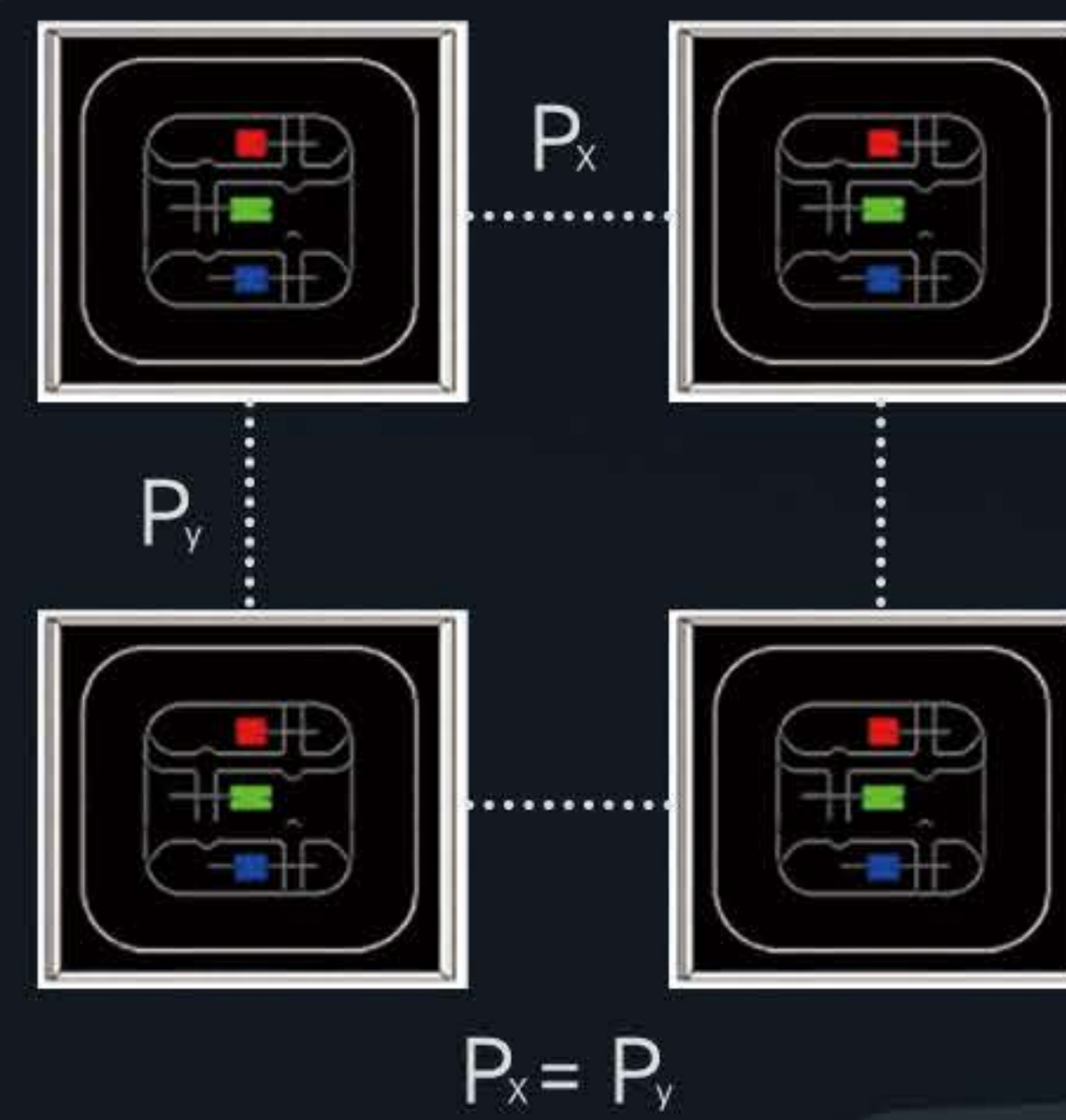
Ultra-Narrow Aluminum Alloy Frame

Sleek lines and enhanced structural reliability.



High Transparency & High Brightness

The STB series offers a transparency range of 40% to 50%, striking a balance between digital visibility and background integration. With brightness levels of 4,500 to 5,000 nits, it delivers vivid visuals even under strong ambient light, making it ideal for retail windows, showrooms, and other indoor glass applications.



Reliable Visual Performance with Symmetric LEDs

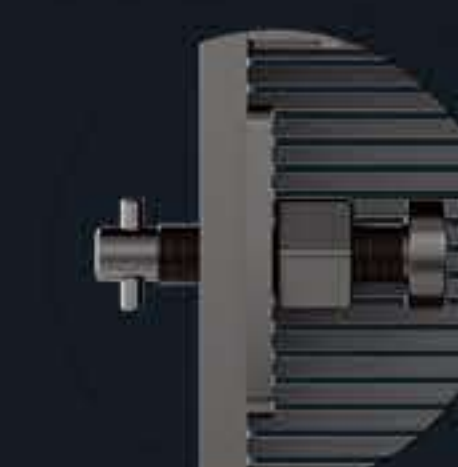
Symmetrically placed LED beads provide uniform image quality without visual distortion, ensuring a consistent and professional presentation across the entire screen.

Front Maintenance and Quick Installation

The STB Series supports front-access servicing, allowing easy removal and replacement of key components like modules, power supplies, and ICs. Its quick-release cabinet design ensures faster installation and reduced maintenance costs throughout the product's life cycle.



Fast lock



Connection Lock

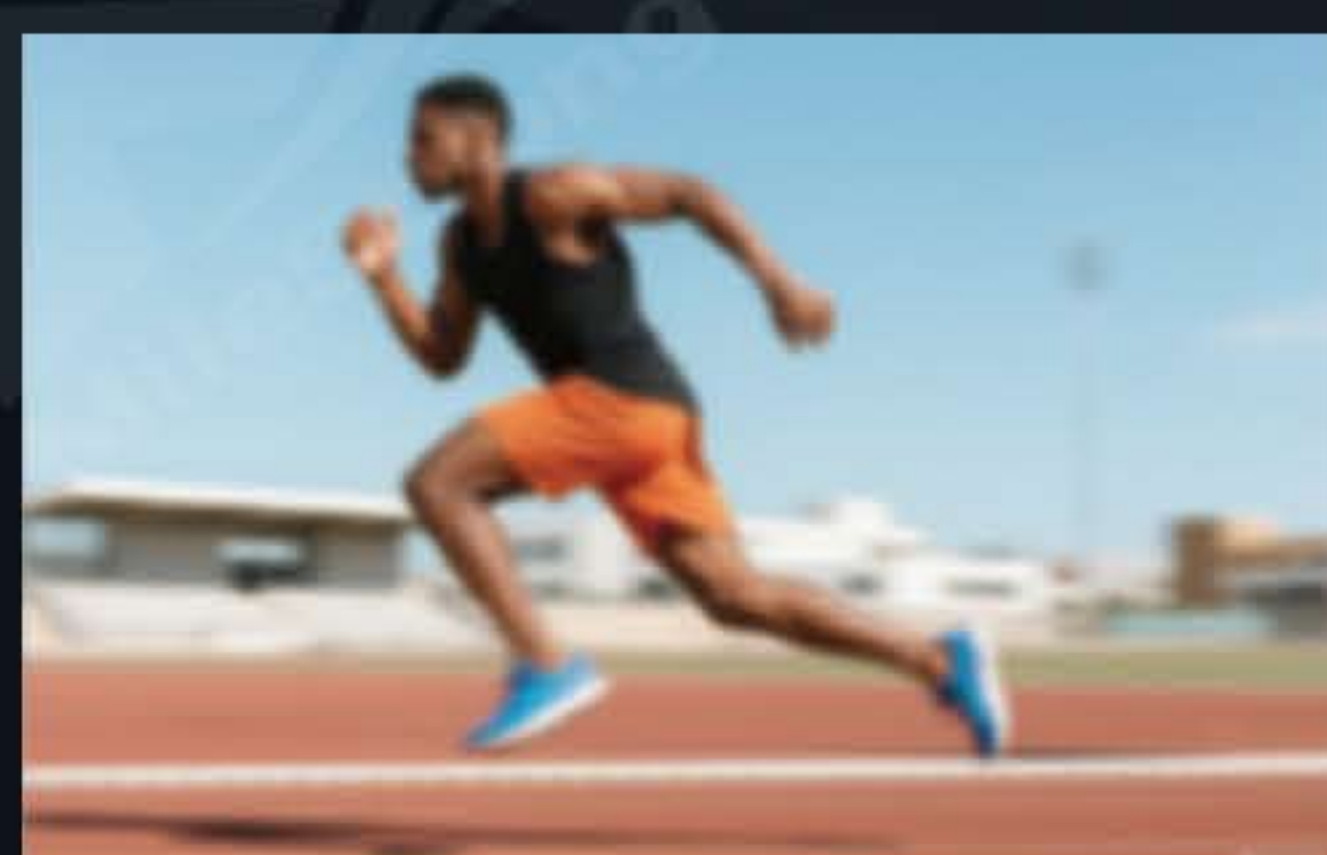


High Refresh Rate and Rich Color Depth

With a 3,840Hz refresh rate and 16-bit grayscale, the STB Series delivers smooth motion, accurate color transitions, and flicker-free visuals, suitable for commercial video content and branding.



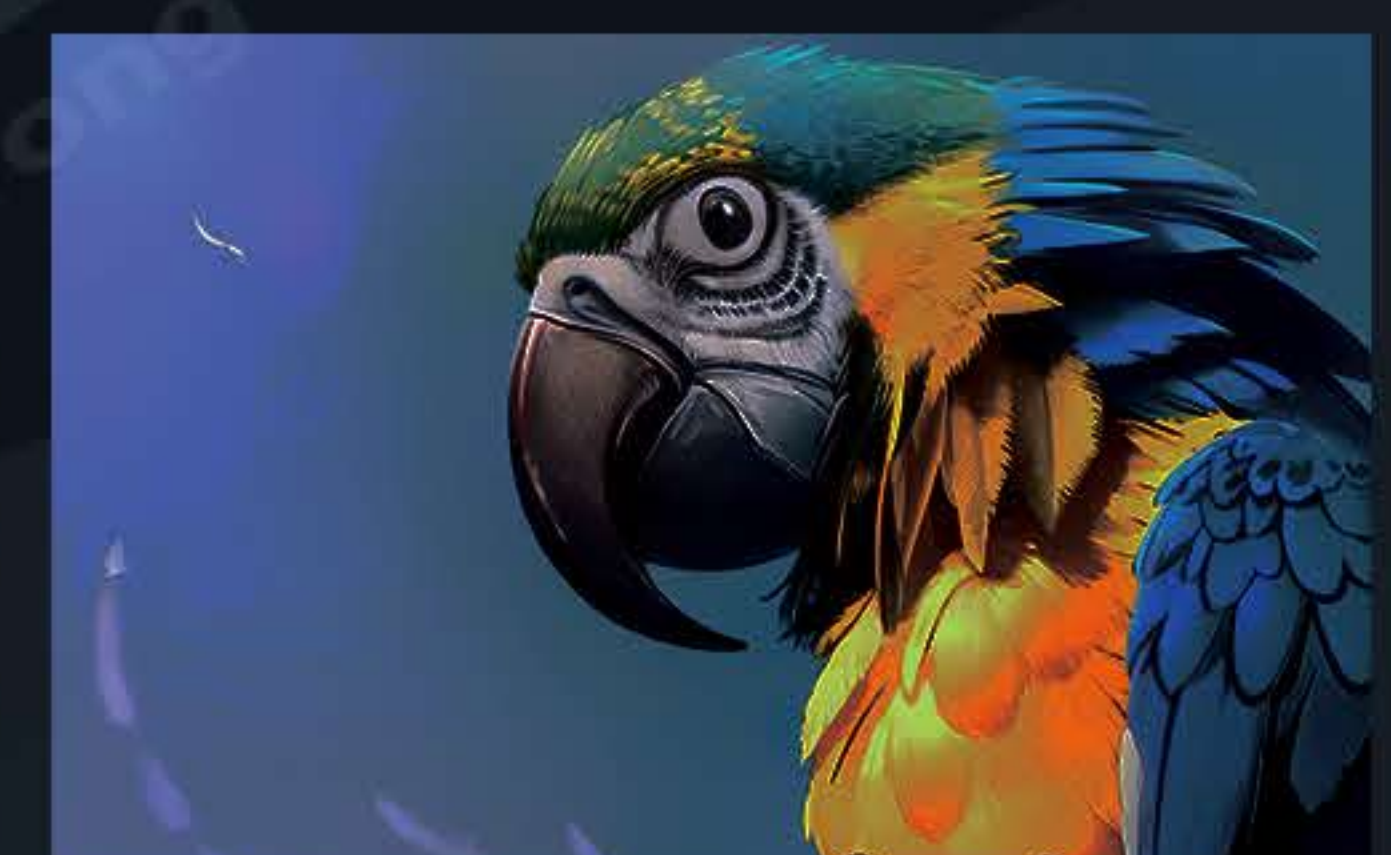
High Refresh Rate



Low Refresh Rate



High Grayscale



Low Grayscale



Seamless Curved Integration

The STB Series supports flexible curved installation, enabling both concave and convex displays. It adapts smoothly to diverse spatial layouts while maintaining reliable structural performance. Its wide 140° viewing angle ensures clear, vibrant visuals from multiple directions without compromising color or brightness.

Multiple Signal Input Compatibility

Supporting AV, S-Video, VGA, DVI, YPbPr, HDMI, and SDI, the screen is compatible with most standard video interfaces, making integration into existing systems effortless.



Application Scenarios

The STB Series is ideal for a wide range of commercial environments, including shopping malls, retail store windows, mobile phone shops, auto 4S stores, and showroom facades. Its high transparency and sleek design make it a perfect choice for delivering impactful advertising without blocking interior views.

Parameters

Items	STB2.6	STB2.97	STB3.47	STB3.91
Pixel Pitch	2.6-2.6mm	2.97-2.97mm	3.47-3.47mm	3.91-3.91mm
LED Lamp Bead Model	SMD1415			
Pixel Composition	1R1G1B			
Module Size (W×H)	500×62.5mm			
Module Resolution (W×H)	192×24mm	168×21mm	144×24mm	128×16mm
Cabinet Size (W×H)	500×500mm / 500×1,000mm	1,000×500mm / 1,000×1,000mm	1,000×750mm / 1,000×1,000mm	1,000×500mm / 1,000×1,000mm
Cabinet Resolution (W×H)	192×192 / 192×384	336×168 / 336×336	288×216 / 288×288	256×128 / 256×256
Module Arrangement (W×H)	1×8 / 1×16	2×8 / 2×16	2×9 / 2×12	2×8 / 2×16
Pixel Density (pixels/m ²)	147,456	112,896	82,944	65,536
Transparency Rate	40%	42%	45%	50%
Cabinet Weight (kg/m ²)	12.5	12	11	10
Scan Mode	1/24	1/21	1/16	1/16
Refresh Rate	3,840 Hz			
Cabinet Material	Aluminum			
Maintenance	Front			
Viewing Angle (H/V)	140°/140°			
Brightness	≤ 5,000 nits			
Grayscale	16 bit			
Signal Input	AV, S-Video, VGA, DVI, YPbPr, HDMI, SDI			
Maximum Power (W/m ²)	800			
Average Power (W/m ²)	240			
Operating Environment	-20 °C ~ 60 °C, 10% ~ 90% RH			

* The specifications are for reference only. Actual parameters may vary depending on the specific model or contractual agreement.



Bring your ideas into reality

MileStrong Headquarters & Showroom

4/F, Building B15, Phase II, Xincheng Chuangzhi Industrial Park, No. 456 Heping Road, Furong District, Changsha, Hunan, China

Shenzhen MileStrong Conventional Display Division

Building 4, Yinjin Technology Industrial Park, Fengjing South Road, Hewan Community, Matian Subdistrict, Guangming District, Shenzhen, Guangdong, China

Shenzhen MileStrong XR/Immersive Display Division

3/F, Building 5, Xinlianhe Industrial Park, Bao'an District, Shenzhen, Guangdong, China

Shenzhen MileStrong Transparent Display Division

3/F, Tianyou Building, Yuekang Road, Bao'an District, Shenzhen, Guangdong, China

Shenzhen Milestrong Technology Co., Ltd.



Website



WhatsApp



WeChat



TikTok



YouTube