



Transparent LED Display

OLED Display

Screen Size: 30" / 55" or Customizable

Ultra-thin Design | Self-Emissive Technology | High Transparency

Ultra-thin Design, Simple and Lightweight

Featuring an ultra-thin structure, the OLED display delivers a clean and modern appearance. Its lightweight design allows for easy handling, installation, and integration into various display setups.



Self-Emissive Technology

Constructed with advanced self-emissive materials, each pixel emits light independently without the need for a backlight. This enables true black levels and enhances overall display performance.



High Transparency Panel

Powered by OLED self-luminous technology, every pixel operates independently to deliver vivid colors and precise brightness control. With up to 43% transparency, the display allows content to blend naturally with real-world objects behind the screen.



Perfect Dynamic Clarity

The display ensures smooth motion performance with clear and stable visuals, making it suitable for dynamic content presentation without motion blur.



Ultra-High Contrast Ratio

With a contrast ratio of up to 200,000:1, the OLED display delivers deeper blacks and brighter highlights, enhancing image depth and visual precision.



Wide Color Gamut

A wider color range enables the display to reproduce more vivid and accurate colors, capturing finer details and presenting richer visual content.



Impact-Resistant Design

The tempered front glass provides reliable protection against external impact. Its robust structure ensures stable performance even in environments with vibration or physical contact.



Rich Interface Design

Equipped with multiple connectivity options to meet different usage needs, including USB, HDMI, LAN (Ethernet), infrared receiver, and audio output.



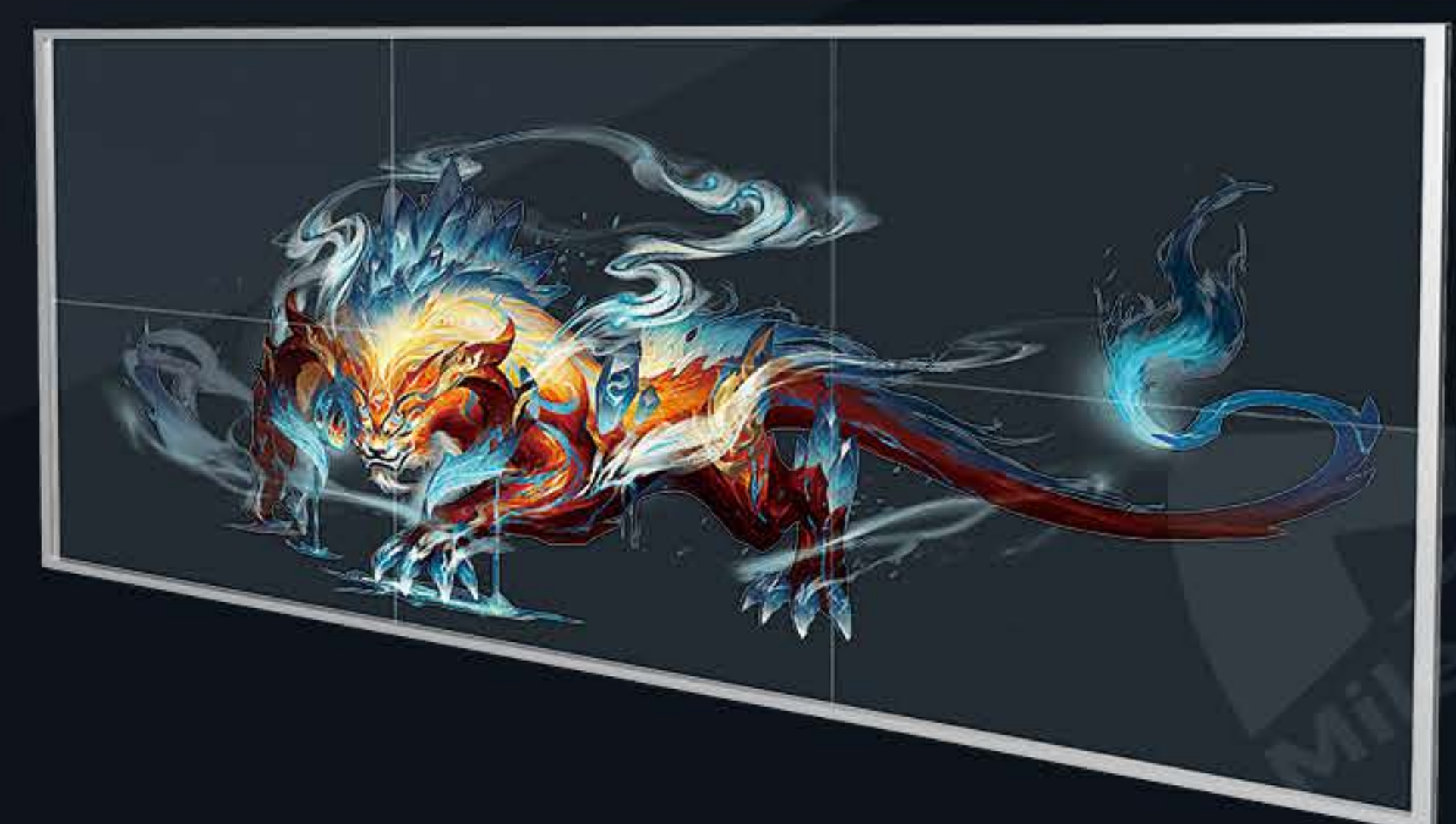
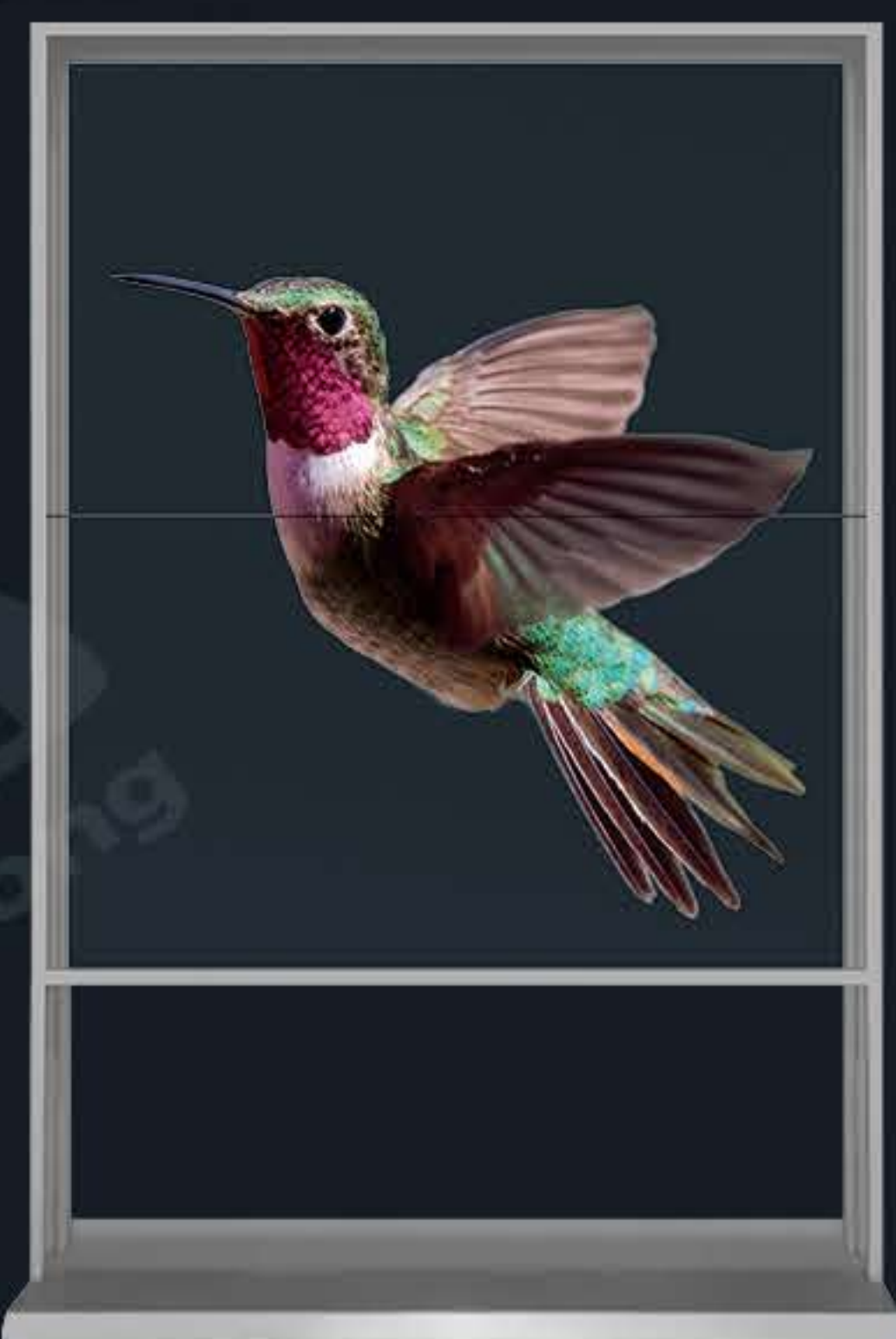
Multiple Design Options

A wide range of structural designs is available to meet diverse project requirements. And custom designs are supported to match specific installation environments.

Transparent Desktop Display



Transparent Splicing Display



Virtual Reception Display



Hanging Display



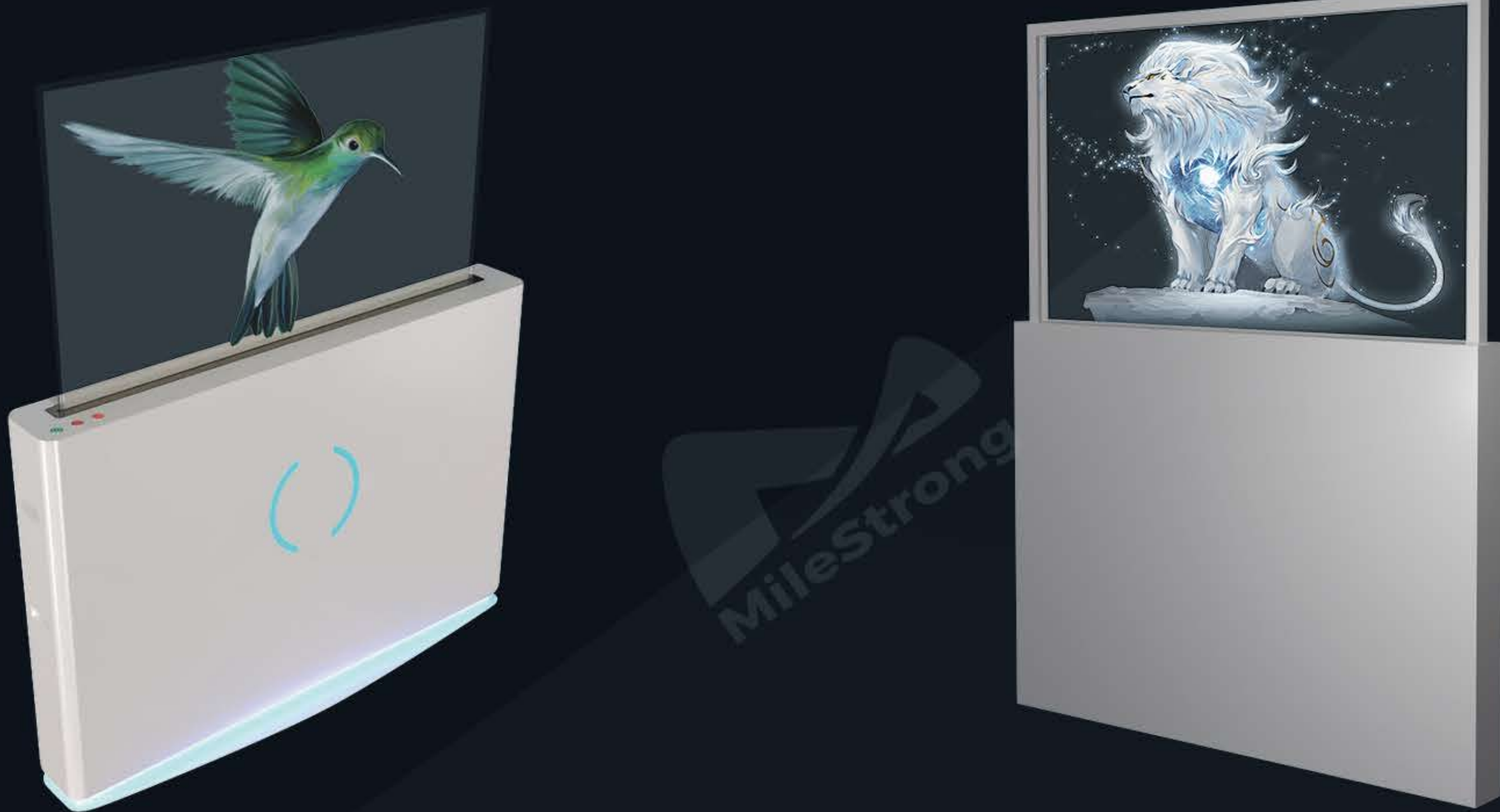
Inclined Display



Vertical Floor-Standing Display



Lifting Display



Mobile Digital Robot Display



Horizontal Floor-Standing Display



Oval Design

Vertical Display



H-shaped Design

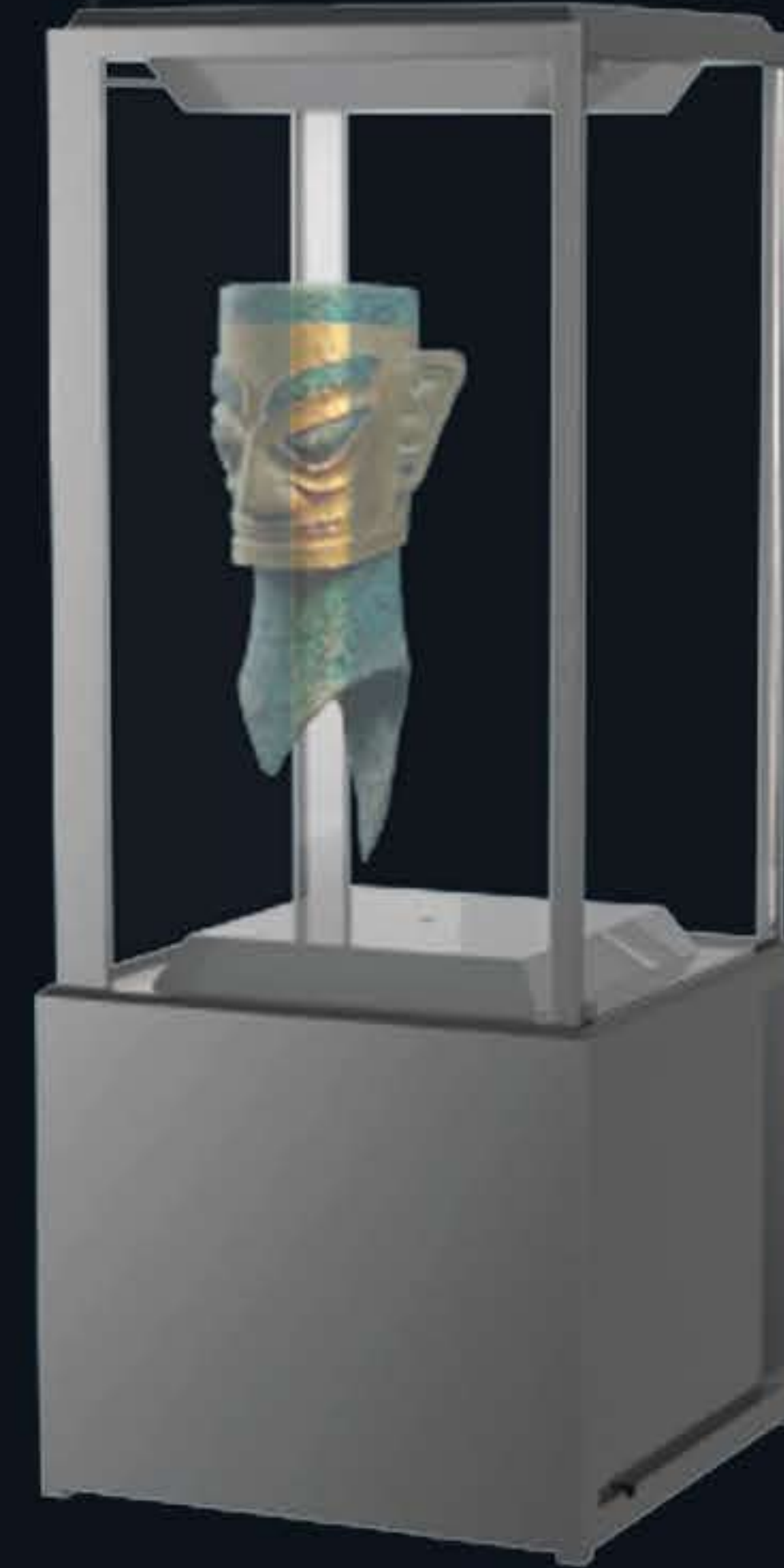
L-shaped Design



Interactive Inquiry Display



Museum Showcase Display



Flip Display



Application Scenarios

The OLED display is widely suitable for a variety of commercial and professional environments, including retail stores, exhibition halls, museums, corporate showrooms, shopping malls, airports, hotels, and other digital signage applications, providing a flexible solution for diverse display needs.





Parameters

Items	OLED30	OLED50
Display Size	30"	50"
Transparency Rate	43%	
Contrast Ratio	Up to 200,000:1	
Aspect Ratio	16:9 or customizable	
Brightness (cd/m ²)	200-600 (adjustable)	
Input Interfaces	USB ×1, HDMI ×1, LAN (Ethernet) ×1	
Output Interfaces	LAN (Ethernet) ×1, Infrared Receiver (remote control), Audio Output (left & right channel, built-in 10W ×2 speakers)	
Input Voltage	AC100V-AC240V, 50/60Hz	
Operating Environment	0 °C ~ 40 °C, 10% ~ 80% RH	
Typical Power Consumption (W)	190	
DPM Power Consumption (W)	3	
Standby Power Consumption (W)	0.5	

*Support full customization according to project requirements.

* The specifications are for reference only. Actual parameters may vary depending on the specific model or contractual agreement.



Bring your ideas into reality

MileStrong Headquarters & Showroom

4/F, Building B15, Phase II, Xincheng Chuangzhi Industrial Park, No. 456 Heping Road, Furong District, Changsha, Hunan, China

Shenzhen MileStrong Conventional Display Division

Building 4, Yinjin Technology Industrial Park, Fengjing South Road, Hewan Community, Matian Subdistrict, Guangming District, Shenzhen, Guangdong, China

Shenzhen MileStrong XR/Immersive Display Division

3/F, Building 5, Xinlianhe Industrial Park, Bao'an District, Shenzhen, Guangdong, China

Shenzhen MileStrong Transparent Display Division

3/F, Tianyou Building, Yuekang Road, Bao'an District, Shenzhen, Guangdong, China

Shenzhen Milestrong Technology Co., Ltd.



Website



WhatsApp



WeChat



TikTok



YouTube